



BURLEY®

Duet



Burley Exclusive Air-hardened Steel Tubing

Burley has been building top quality tandems from premium steel tubing for the past 17 years. Over that time the tubing has evolved from plain gauge 4130 to the exotic air-hardened OX Platinum steel. OX Platinum is a

proprietary alloy that increases in strength when welded. The unprecedented 217,000 psi ultimate tensile strength, 11 percent increase in fatigue life and 20 percent increase in impact strength allow for tubing designs as much as 20 percent lighter in weight compared to conventional Chromoly steel. What does this mean for you? The most comfortable, lively, race-ready tandems you can find!



Strong, Resilient Burley-built Forks

The fork is a key component of any bicycle frameset. Too stiff, and the ride is harsh and fatiguing for the captain; too flexible, and control and confidence are jeopardized. Burley tandem forks feature an externally butted, oversized steer tube and custom taper gauge True Temper fork blades. Our forks deliver solid, precise handling and are strong and durable.

Duet

frame	True Temper OX Platinum
fork	True Temper Custom Butted Blades and Internally and Externally Butted Steerer Tube; Made in Eugene, OR
headset	Cane Creek S2
crankset	Truvativ Elita
BB	Truvativ ISIS SL
f derailleur	Shimano 105®
r derailleur	Shimano XT SGS®
shifters	Shimano 105 STI®
cassette	SunRace M92 11-32 9sp
chain	SunRace CN99
rim	Weinmann DPX
spokes	DT Swiss 2.0 Stainless
hub	Shimano XT 40h®
tires	Panaracer Pasela
f brake	Tektro RX5 Mini-V
r brake	Avid 203mm Ball Bearing 7
brk lvrs	Shimano 105 STI®
pedals	n/a
f handlebar	Truvativ XR Aeroobar
r handlebar	Ritchey Logic Pro, 46cm
stem	Truvativ XR
grips	Cork Tape
seats	Sella Italia Iniziale/lady
f seatpost	Ritchey Comp, 300mm
r seatpost	Ritchey Comp, 300mm
sizes	XS, S, M, L
color	Firebird, Seafoam

Note: The following components are products of Shimano Corporation and Shimano, Inc. and the trademarks noted below apply: Deore®, Deore LX®, Deore XT®, Dura-Ace®, Hyperglide®, Shimano Disc Brake™, Rapidfire®, Shimano®, Shimano Alivio®, Shimano Deore®, Shimano Wheel Aerodynamics Technology®, Shimano 105®, STI, Ultegra®. All rights reserved.

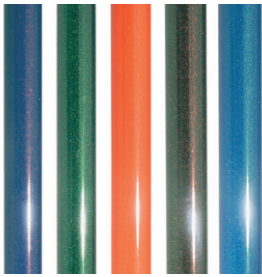
Burley Design Cooperative • www.burley.com • burley@burley.com

4020 Stewart Road • Eugene, OR 97402 USA • 541-687-1644 • 800-311-5294 • Fax: 541-687-0436



BURLEY®

Tandem Options and Accessories

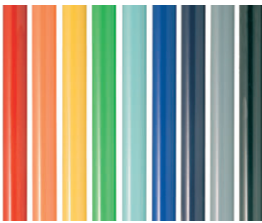


Illusions

**New For 2005,
Two Color Choices For Each Model**

Show your true colors! We have a spectacular color lineup this year that offers something for everyone, from the conservative colorist to the eccentric show-off, including a series of dazzling Illusion topcoats.

Illusion series from left to right: Sapphire, Emerald, Red Amber, Black Amber, Crystalline Topaz



Solids

Solid colors from left to right: Firebird, Orange Zinger, Buttercup, Grass Stain, Seafoam, Moody Blue, Midnight Blue, Ghost Grey, Classic Black



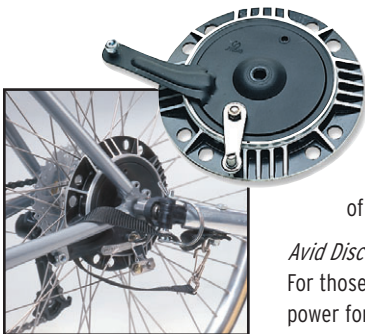
Rock Shox™ Suspension Seatpost
Our Rock Shox™ suspension seatpost features a supple and responsive elastomer spring with a wide range of preload adjustment. The simple, lightweight design is an excellent way to improve stoker comfort.



Drop Bar Kit
Gear up your Burley Samba or Rock 'n Roll for touring with our streetwise drop bar option.



Child Stoker Kit
The Burley Child Stoker kit is a perfect way to share the fun of bicycling with a child. The Kit fits 5 to 10 year-old stokers so they can safely tandem with an adult captain. After initial installation, the child's pedals can be removed or re-installed in five minutes with simple hand tools, allowing an easy conversion from child to adult use. Connect with your local Burley dealer for conversion.



Arai Drum Brake

For loaded touring or steep descents, Burley's drum brake kit provides added speed control while maintaining the precise feel and efficiency of each primary brake.

Avid Disc Brake Kit

For those who want the ultimate in stopping power for their Paso Doble or Duet. Includes: Avid 203mm Rotor, Avid road caliper, DT Disk Adapter and tandem brake cable.



Burley Alternative Hitch
To tow a Burley child trailer or cargo trailer on a tandem with disk brakes, use the quick-release Alternative Hitch.

Burley Tandem Geometry

	SEAT TUBE LENGTH	HEAD ANGLE	FRONT SEAT ANGLE	REAR SEAT ANGLE	FRONT TOP TUBE LENGTH - IN. (CM)	REAR TOP TUBE LENGTH - IN. (CM)	FRONT STANDOVER HEIGHT - IN. (CM)	REAR STANDOVER HEIGHT - IN. (CM)
ROAD ALUMINUM (S)	21/18 [54/46]	73°	74°	74°	22.0 [56.0]	27.5 [70.0]	31.1 [79.0]	28.4 [72.1]
ROAD ALUMINUM (M)	22/19 [56/48]	73°	73°	73°	22.4 [57.0]	27.5 [70.0]	31.9 [81.0]	29.2 [74.2]
ROAD ALUMINUM (L)	23/20 [59/51]	73°	72.5°	72.5°	23.2 [59.0]	27.5 [70.0]	32.7 [83.0]	29.9 [76.0]
ROAD STEEL (XS)	19/17 [50/43]	73°	73°	73°	21.5 [55.0]	27.5 [70.0]	29.0 [73.6]	27.1 [68.9]
ROAD STEEL (S)	21/18 [54/46]	73°	74°	74°	22.0 [56.0]	27.5 [70.0]	31.0 [78.6]	28.4 [72.1]
ROAD STEEL (M)	22/19 [56/48]	73°	73°	73°	22.4 [57.0]	27.5 [70.0]	31.7 [80.6]	29.3 [74.3]
ROAD STEEL (L)	23/20 [59/51]	73°	72.5°	72.5°	23.2 [59.0]	27.5 [70.0]	32.6 [82.7]	30.2 [76.6]
MOUNTAIN (S)	19/15 [49/38]	73°	73°	73°	22.6 [57.5]	27.5 [70.0]	29.6 [75.2]	26.2 [66.5]
MOUNTAIN (M)	20.5/17 [52/43]	73°	73°	73°	22.6 [57.5]	27.5 [70.0]	30.7 [78.1]	27.9 [70.9]
MOUNTAIN (L)	22/19 [56/48]	73°	73°	73°	23.4 [59.5]	27.5 [70.0]	31.8 [80.8]	29.5 [75.0]
ZYDECO MIXTE-X	20/15.5 [51/39]	73°	73°	73°	22.6 [57.5]	27.5 [70.0]	30.4 [77.3]	19.2 [48.8]

Burley Design Cooperative • www.burley.com • burley@burley.com

4020 Stewart Road • Eugene, OR 97402 USA • 541-687-1644 • 800-311-5294 • Fax: 541-687-0436